

Your plan of support


The Salvation Army offers support to people who may be victims of modern slavery and human trafficking. This is when someone has taken away your freedom because they want to gain something for themselves by making you do things you don't want to.

There are signs that this could have happened to you. The UK Government pays for the support you will get through something called the **National Referral Mechanism (NRM)**. It has decided you could be a victim of modern slavery. Meaning The Salvation Army can help you. This leaflet will tell you what help you can get and how this works.

Welcome to our service



1



Someone from The Salvation Army will contact you either by phone or sometimes face to face.

2

You will be introduced to your own personal support worker either at a new safe place to stay or support where you are staying now.

Your support worker will find out about you, they will enquire about your safety, health and welfare.



0800 808 3733



Your support



Money help and advice



Physical and mental well-being



Legal rights and support



Somewhere safe to stay



Practical help and guidance



Help with transport



Future planning



Cultural and spiritual needs



Interpreting and translation services



Support for children to go to school



Help with making complaints



Help the police to put the people who took advantage of you on trial

These are your entitlements!



3 Your support worker will work with you to create your individual plan of support*.

4 Your support worker will meet with you or contact you regularly.

*Your plan of support is a special plan for you, to guide and track the support you will get, based on what you need. It will include a plan to help you leave us to live more independently at the right time. It will help us make sure that everything you need is ready when you leave us. This will include a place to live. We will review your plan with you at least every month. Please tell us if anything changes for you. Then we can change your special plan so it still meets your needs.



Moving on



If the **NRM** has enough information to decide that you were a victim of modern slavery then we can give you lots of support through the **NRM** for another 45 days.

If the **NRM** does not have enough information to decide that you were a victim of modern slavery then we can give you lots of support for another nine days.

6

You will receive a letter from the **NRM**. The letter will tell you if there is enough information to decide that you were definitely a victim of modern slavery.

We support you until the right time where you can move on and live independently.

5

Your support worker will review your plan of support with you, to discuss and decide what happens when you leave us and take the next steps in your life.



7

As you move closer to independence, your support worker will continue to check on whether everything is ready and in place for you to move on.



Your future



Links to activities and places where you can get help including finding a job.



Someone to translate important information into your own language to help you understand and access to English language classes.

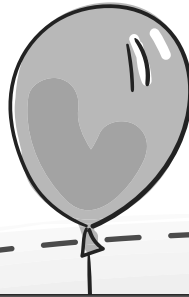


Help finding counselling and other therapies.



8

You could still need help with some things after you have moved on. We can still help you and we will make sure you know who to contact and how to get in touch.



Information for you

