

A PATTERN SERVICE for 'WAR CRY' READERS

Introducing MERRY TREADLE

THE woman-Salvationist is taught to dress at all times in conformity with her profession as a servant of Jesus Christ, her appearance clearly indicating her separation from the world.

Counsel is frequently given on this matter from the platform, and in The Army's periodicals.

Many of the younger women are, however, perplexed in the matter of living up to this standard when they buy and make their clothes for every-day wear.

Vogues and fashions inevitably influence all ready-made clothes and the patterns obtainable through usual channels. As a result, there is sometimes misunderstanding and heart burning when the only reason for apparent departure from Army practice has been absence of guidance.

In order to assist in this matter 'The War Cry' has secured the services of an expert dressmaker who will design dresses and coats which

are pleasing, simple and consistent with the ideal recently expressed by John Quietstream that 'our dressing should never cause the lonely and poor to feel uncomfortable.'

'THE WAR CRY' PATTERN SERVICE

34 in., 36 in., 38 in. and 40 in. Bust

Name

Address

Pattern No.

Size



No. 1. — TAILOR-LINE
FROCK

This frock is made on tailor lines, with the revers and pleats in skirt, plain sleeves darted at shoulder. Would make up very nicely in woollen material, in 4 yd. required of 36 in., or 3 yd. of 54 in. for 36 in. bust.

are pleasing, simple and consistent with the ideal recently expressed by John Quietstream that 'our dressing should never cause the lonely and poor to feel uncomfortable.'

The restriction upon activity away from home in the evenings is turning the thoughts of many toward home dressmaking, and it is hoped that this new feature will be of assistance to many of our women readers.

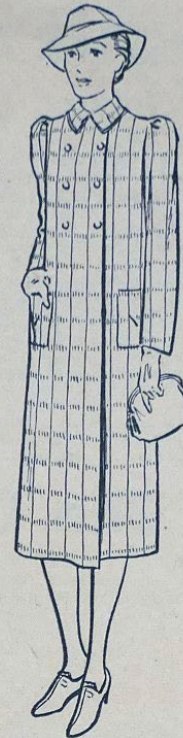
Patterns can be supplied, price 6d. each. Fill in coupon above (block letters), and send, with cash, to: Merry Treadle, c/o 'The War Cry,' The Campfield Press, St. Albans.

Suggestions as to the most useful designs and garments would be welcomed. Merry Treadle (who wears an Army bonnet and knows the Army girl through and through) is at your service!



No. 2. — PLAID
GOAT.

This coat will take 24 yd., 54 in. plaid material and 3½ yd. 36 in. for lining: for 36 in. bust.



AUNT DORA'S ECONOMY CORNER

BUTTER AND OTHER THINGS

BUTTER rationing commences next Monday. Henceforth, till happier days arrive, each person is to have a quarter of a pound per week.

I must confess I was somewhat dismayed when I first looked at the ¼ lb. allowed for our family. It seemed a pathetically small packet to last a long week. I felt better, however, when with ¼ lb. butter I mixed ¼ lb. of good margarine and warmed it by the fire.

I then warmed in a small saucepan three tablespoonfuls of milk and beat this into the butter and margarine. The result was certainly better than I expected. The butter-margarine-milk mixture was quite palatable!

May I remind women readers again of the splendid food value of lentils? Now that meat is so expensive and eggs are beyond the reach of many family purses, lentils should be used frequently. They are very nourishing, being one of the richest

foods known. 1 lb., costing, even now, only about 4s., contains 5½ oz. of protein and 10 oz. of heat and energy-giving food, while 1 lb. of beefsteak only contains 2½ oz. of protein and 2 oz. of fat for heat and energy.

They can be made into soup as follows:
1½ pt. of water to ¼ pt. of lentils, a small onion, and gravy salt to flavour and colour the liquid.

Allow one and a half hours for boiling, or three-quarters of an hour over fuel and one and a half hours in hay box.

Lentil roast is another good way in which to serve this valuable food:

1 lb. of lentils, 1 large chopped onion, ¾ lb. of breadcrumbs, ¼ lb. of cold mashed potatoes, pepper, salt and parsley (if obtainable).

Wash lentils and cook gently in just enough water to cover, until quite soft. When soft, mix with other ingredients, place in greased baking-tin and bake till brown.

AUNT DORA

will send a useful household gift to readers whose economy hints are published in this section. Address your good idea to her, c/o 'The War Cry,' The Campfield Press, St. Albans, Herts.

MERRY
TREADLE'S
(WAR CRY)
PATTERN
SERVICE

Garments for
Salvationists
and others who
wish to dress
simply and in-
expensively

Pattern
No. 3.—AN AFTER-
NOON DRESS

This would make a charming little afternoon dress, with its dainty lace collar and softly shirred bodice. Sleeves are gathered at shoulder. Velvet or woollen material would make up nicely. For 36 in. bust: 4½ yd., 36 in., or 3 yd., 54 in.



To MERRY TREADLE,
'The War Cry,'
The Campfield Press,
St. Albans.

'THE WAR CRY' PATTERN SERVICE
34 in., 36 in., 38 in. and 40 in. Bust

Name

Address

(Block letters preferred)

Pattern No.

Size

(Please enclose sixpence)

MERRY
TREADLE'S
(WAR CRY)
PATTERN
SERVICE

Garments for
Salvationists
and others who
wish to dress
simply and in-
expensively

Pattern No. 4.
AN AFTERNOON
FROCK.

This dress would make a becoming afternoon frock with its contrast lacing, shirred bodice and two-panel skirt. For 36 in. bust allow 4 yd., 36 in., or 2½ yd., 54 in., and ¾ yd. of contrasting material.



'THE WAR CRY' PATTERN SERVICE

34 in., 36 in., 38 in. and 40 in. Bust

Name

Address

Pattern No.

Size

Patterns can be supplied, price 6d. each. Fill in coupon above (block letters), and send, with cash, to: Merry Treadle, c/o 'The War Cry,' The Campfield Press, St. Albans.

MERRY TREADLE'S
(WAR CRY) PATTERN
SERVICE

Garments for
Salvationists
and others who
wish to dress
simply and in-
expensively



No. 5.—TWEED
COAT

This serviceable tweed coat would need 3 yd., 54 in. tweed and 1 yd. of 6-in. astrakhan for collar; 3½ yd., 36-in. material for lining.

'THE WAR CRY' PATTERN SERVICE
34 in., 36 in., 38 in. and 40 in. Bust

Name

Address

Pattern No.

Size

Patterns can be supplied, price 6d. each. Fill in coupon above (block letters), and send, with stamps, to: Merry Treadle, c/o 'The War Cry,' The Campfield Press, St. Albans.

Merry Treadle's Pattern Service

Non-uniform wear consistent with Army principles



No. 7.—Blouse.
This blouse would be best made in a silk material. 1 1/2 yd. of 36-in. material.

No. 8.—Tweed Skirt.
This skirt will need 1 1/2 yd. of 54-in. material

Patterns can be supplied, price 6d. each. Fill in coupon below (block letters) and send, with stamps, to: Merry Treadle, c/o 'The War Cry,' The Campfield Press, St. Albans.

'THE WAR CRY' PATTERN SERVICE
34 in., 36 in., 38 in. and 40 in. Bust

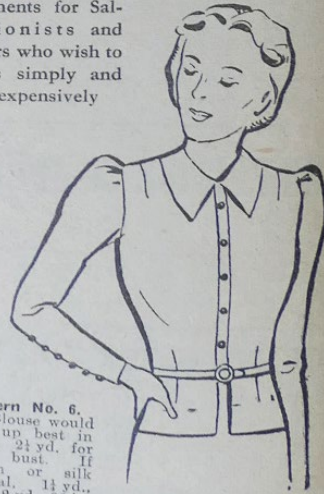
Name

Address

Pattern No. Size

MERRY TREADLE'S ('WAR CRY') PATTERN SERVICE

Garments for Salvationists and others who wish to dress simply and inexpensively



Pattern No. 6.
This Blouse would make up best in velvet. 2 1/2 yd. for 36 in. bust. If woollen or silk material. 1 1/2 yd., 54 in.; 2 yd., 36 in.

'THE WAR CRY' PATTERN SERVICE

34 in., 36 in., 38 in. and 40 in. Bust

Name

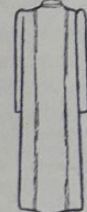
Address

Pattern No. Size

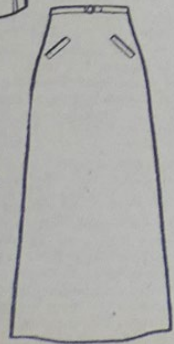
Patterns can be supplied, price 6d. each. Fill in coupon above (block letters) and send, with cash, to: Merry Treadle, c/o 'The War Cry,' The Campfield Press, St. Albans.

Merry Treadle's Pattern Service

Non-uniform wear consistent with Army principles



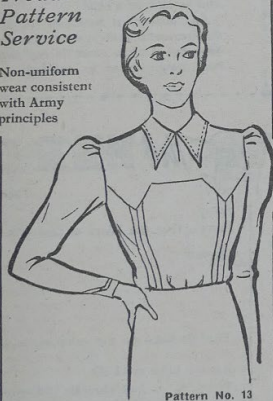
Pattern No. 9.
Tweed Coat. A fancy tweed will make up best for this coat. 3 yd. of 54-in. material and 3 1/2 yd. of 36 in. for lining.



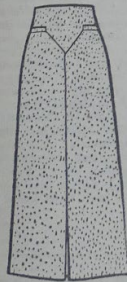
Pattern No. 10.
This skirt will only need 1 yd. of 54 in. material. Very plain and easy to make.

*Merry
Treadle's
Pattern
Service*

Non-uniform
wear consistent
with Army
principles



Pattern No. 13
Satin blouse.
—This smart
little blouse
would make up
best in a satin
material. 2 yd.
of 36 in. for
36 in. bust.
Would look
very nice with



Pattern No. 14
Skirt, which will
need 1 1/2 yd. of 54 in.
material for a 36 in.
hip.

Patterns can be
supplied, price 6d.
each. Fill in
coupon below
(block letters) and
send, with cash, to:
Merry Treadle, c/o
'The War Cry,' The Camp-
field Press, St. Albans.

'THE WAR CRY' PATTERN SERVICE
34 in., 36 in., 38 in. and 40 in. Bust

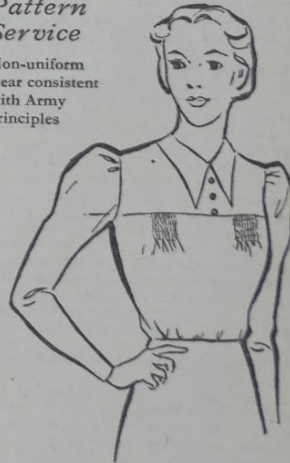
Name

Address

Pattern No. Size

*Merry
Treadle's
Pattern
Service*

Non-uniform
wear consistent
with Army
principles



Pattern No. 11

Crépe de Chine is best for this blouse.
1 1/2 yd. of 36 in. material for 36 in. bust.

Patterns can be supplied, price 6d.
each. Fill in coupon below (block
letters) and send, with cash, to: Merry
Treadle, c/o 'The War Cry,' The Camp-
field Press, St. Albans.

'THE WAR CRY' PATTERN SERVICE
34 in., 36 in., 38 in. and 40 in. Bust

Name

Address

Pattern No. Size

*Merry
Treadle's
Pattern
Service*

Non-uniform
wear consistent
with Army
principles



Pattern No. 12
This frock has
strappings let in
bodice as trim-
ming, also at
tops of sleeves.
Would make up
well in a woolen
material—2 1/2 yd.
of 54 in., or 4 yd.
of 36 in. material.

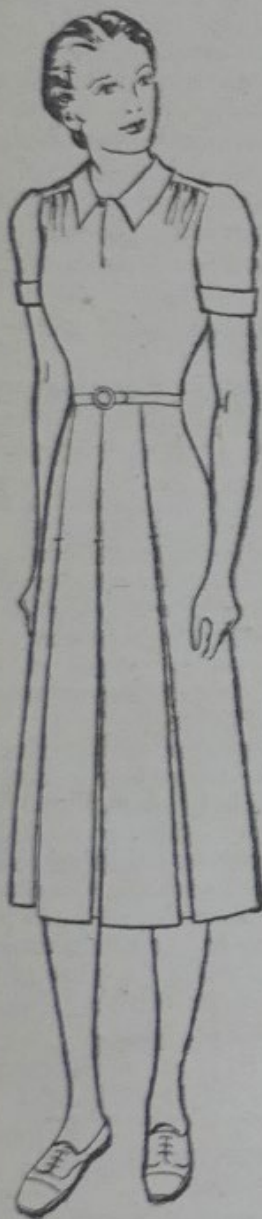
Patterns can be supplied. Price 6d.
each. Fill in coupon above (block
letters) and send, with cash, to: Merry
Treadle, c/o 'The War Cry,' The Camp-
field Press, St. Albans.

'THE WAR CRY' PATTERN SERVICE
34 in., 36 in., 38 in. and 40 in. Bust

Name

Address

Pattern No. Size



*Merry
Treadle's
Pattern
Service*

Non-uniform
wear consistent
with Army
principles

Pattern No. 15

This plain, but
neat, out-door frock
will take $3\frac{1}{2}$ yd. of
36 in. white pique
or coloured material
for 36 in. bust.

Patterns can be
supplied, price 6d.
each. Fill in
coupon (block let-
ters) and send, with
cash, to: Merry
Treadle, c/o 'The
War Cry,' The
Campfield Press,
St. Albans.

LETTER-WRIT

MANY people are writing more letters than hitherto. Mothers and wives, whose hands are more accustomed to the care of children or to the manipulation of household and cooking utensils, must write to absent husbands and sons.

Men skilful in the use of tools find an awkwardness in handling the pen.

Yet letter-writing is, after all, merely planning the thoughts and words which would constitute a conversation were the recipient of the letter actually present.

We are urged to depart from the usual trite sentences which form the contents of the average letter—concerning the weather, safe arrivals and hopes for health. The person receiving the

GRAMOPHO

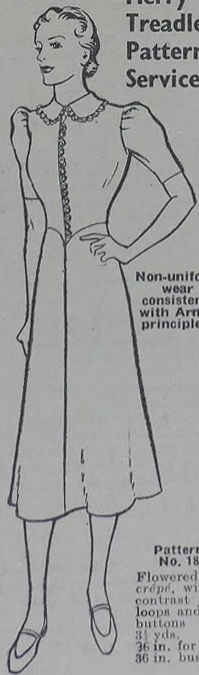
Croydon Citadel Band (Adjutant J. Searle) has added two vigorous Band records to the constantly growing collection of Army music for the gramophone. 'Our Inspiration' (Scotney) and 'Glorious Freedom' (Kirk) are played with inspiring rhythm and colour, the styles of the two composers making an instructive contrast.

Name

Address

Pattern No. Size

**Merry
Treadle's
Pattern
Service**



Non-uniform
wear
consistent
with Army
principles

**Pattern
No. 18**
Flowered
crêpe, with
contrast
loops and
buttons
31 yds.
36 in. for
36 in. bust

Patterns can be supplied,
price 6d. each. Fill in coupon
(block letters) and send, with
cash, to: Merry Treadle, c/o
'The War Cry,' The Campfield
Press, St. Albans.

Name

Address

Pattern No. Size

**Merry
Treadle's
Patterns**



**Pattern
No. 16**
31 yds.
36 in. for
36 in. bust.
Silk or
cotton.

Patterns can be supplied,
price 6d. each. Fill in coupon
(block letters) and send, with
cash, to: Merry Treadle, c/o
'The War Cry,' The Campfield
Press, St. Albans.

Name

Address

Pattern No. Size

**Merry
Treadle's
Pattern
Service**



Non-uniform
wear
consistent
with Army
principles

**Pattern
No. 17**
Flowered
crêpe with
contrast
trilling at
the neck.
31 yds.
36 in. for
36 in. bust

Patterns can be supplied,
price 6d. each. Fill in coupon
(block letters) and send, with
cash, to: Merry Treadle, c/o
'The War Cry,' The Campfield
Press, St. Albans.

Name

Address

Pattern No. Size

**MERRY TREADLE'S
PATTERN SERVICE**

Non-uniform
wear
consistent
with Army
principles



Pattern No. 19
This frock makes up well in
wool, rayon or signaline.
3 yds. 54-in. or 4 yds. 86-in.
material for 36 in. bust.

Patterns can be supplied,
price 6d. each. Fill in coupon
(block letters) and send, with
cash, to: Merry Treadle, c/o
'The War Cry,' The Campfield
Press, St. Albans.

Name

Address

Pattern No. Size

Merry Treadle's Patterns

Non-uniform
wear for
Salvationists



**Pattern
No. 21**
Pinafore
Dress.
Required—
2 yd. 54-in.
or 2½ yd.
36-in.
material

ward re-
marked
that it had
all come
back to him
very vividly.
On an-
other occa-
sions on one
young air-
man was
amongst a
company
who joined in si-
te 'Joy Hour'
a little pause he
na! Father, s
When he left t
lowed him out
just come back
leave. He had a
sea that week.
able outside, be
and I felt sorry

Patterns can be supplied,
price 6d. each. Fill in coupon
(block letters) and send, with
cash, to: Merry Treadle,
c/o 'The War Cry,' The Campfield
Press, St. Albans.

Name

Address

Pat. No. Size

**MERRY TREADLE'S
PATTERN
SERVICE**

Non-uniform
wear for
Salvationists



Pattern No. 20
2 yd. of
54 in. material
or 2½ yd. of
36 in. material
for this pina-
fore frock

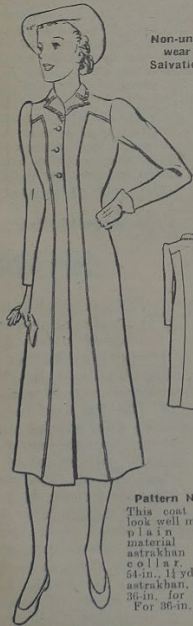
Patterns can be supplied,
price 6d. each. Fill in coupon
(block letters) and send, with
cash, to: Merry Treadle, c/o
'The War Cry,' The Campfield
Press, St. Albans.

Name

Address

Pattern No. Size

Merry Treadle's
Pattern Service



Non-uniform
wear for
Salvationists

Pattern No. 24
This coat would
look well made in
plain coat
material with
astrakhan round
collar. 34 yds.
6 in., 11 yds., 4 in.,
astrakhan, 81 yds.
36 in. for lining.
For 36 in. bust.

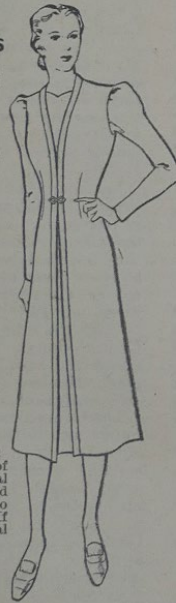
Patterns can be supplied,
price 6d. each. Fill in coupon
(block letters) and send, with
cash, to: Merry Treadle, c/o
'The War Cry,' The Campfield
Press, St. Albans.

Name

Address

Pattern No. Size

Merry
Treadle's
Patterns



Non-Uniform
Wear
for
Salvationists

Pattern No. 22
2 1/2 yards of
54-in. material
will be needed
for this edge to
edge coat. If
36-in. material
is used,
3 1/2 yards

Patterns can be supplied, price
6d. each. Fill in coupon (block
letters) and send, with cash, to:
Merry Treadle, c/o 'The War
Cry,' The Campfield Press,
St. Albans.

Name

Address

Pat. No. Size

Merry
Treadle's
Pattern
Service



Pattern No. 23
This suit, pin-
tucked to
form panel
effect, needs
3 yd. of 54 in.
material for
36 in. bust

Patterns can be supplied,
price 6d. each. Fill in coupon
(block letters) and send, with
cash, to: Merry Treadle, c/o
'The War Cry,' The Campfield
Press, St. Albans.

Name

Address

Pattern No. Size

Merry Treadle's Pattern Service



Pattern No. 26

4½ yds of 36-in., or
3½ yds. of 54-in.
material for 38-in.
bust

Patterns can be supplied,
price 6d. each. Fill in coupon
(block letters) and send, with
stamps to Merry Treadle, c/o
'The War Cry,' The Campfield
Press, St. Albans.

Name

Address

Pattern No..... Size.....

Merry Treadle's Pattern Service



No. 25

Matron's Dress.
4½ yds. of 36-in.
material or 3½ yds.
of 54-in. is re-
quired.

Stock sizes, 38, 40,
42, 44 in. Bust.

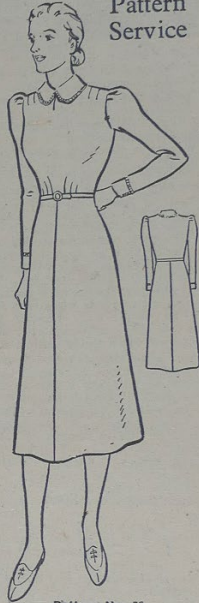
Patterns can be supplied,
price 6d. each. Fill in coupon
(block letters) and send, with
cash, to: Merry Treadle, c/o
'The War Cry,' The Campfield
Press, St. Albans.

Name

Address

Pattern No..... Size.....

Merry Treadle's
Pattern
Service



Pattern No. 28

Contrasting collar and cuffs make this frock interesting. Any light woollen material. 2½ yds. 54-in. material; 4 yds. 86-in. material. 4 yds. contrast for collar and cuffs; 3 yds. narrow lace for edging. 36-in. bust.

Patterns can be supplied, price 6d. each. Fill in coupon (block letters) and send with stamps to Merry Treadle, c/o "The War Cry," The Campfield Press, St. Albans.

Name

Address

.....

.....

Pattern No. Size

MERRY
TREADLE'S
PATTERN
SERVICE



Pattern
No. 29
This overall
requires
3½ yds. of
cotton
material

Patterns 6d. each. Fill in coupon below (block letters) and send, with stamps, to Merry Treadle, c/o "The War Cry," The Campfield Press, St. Albans, Herts.

Name

Address

.....

.....

Pattern No. Size

Merry Treadle's
Pattern
Service



Pattern No. 27
Afternoon
frock; suit-
able in a
woollen
material.
3 yds. of 54-in.
material for
36-in. bust.

Patterns can be supplied, price 6d. each. Fill in coupon (block letters) and send with stamps to Merry Treadle, c/o "The War Cry," The Campfield Press, St. Albans.

Name

Address

.....

.....

Pattern No. Size

**MERRY TREADLE'S
PATTERN
SERVICE**



**Pattern
No. 32**

This little linen coat will be so useful for hot days to slip on over a summer frock. 2 yds. of 36-in. for a 36-in. bust Patterns 6d. each. Fill in coupon below (block letters) and send, with stamps, to Merry Treadle, c/o 'The War Cry,' The Camp-field Press, St. Albans, Herts.

Name

Address

Pattern No. Size

**MERRY
TREADLE'S
PATTERN
SERVICE**



**Pattern
No. 31**

Four yards of 36-in. cotton with 1/2 yd. of contrast for collar and cuffs

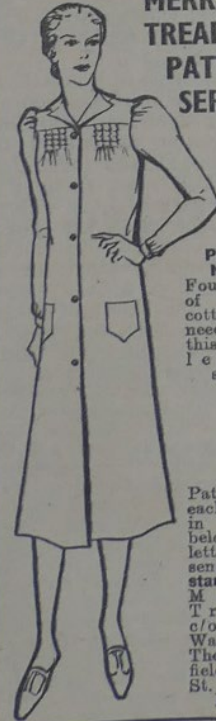
Patterns 6d. each. Fill in coupon below (block letters) and send, with stamps, to Merry Treadle, c/o 'The War Cry,' The Camp-field Press, St. Albans, Herts.

Name

Address

Pattern No. Size

**MERRY
TREADLE'S
PATTERN
SERVICE**



**Pattern
No. 30**

Four yards of 36-inch cotton are needed for this full-length smock

Patterns 6d. each. Fill in coupon below (block letters) and send, with stamps, to Merry Treadle, c/o 'The War Cry,' The Camp-field Press, St. Albans, Herts.

Name

Address

Pattern No. Size

**MERRY TREADLE'S
PATTERN
SERVICE**



Pattern No. 33
Afternoon
frock.
2 1/2 yd. 54-in.
material for
36-in. bust.
Patterns 6d.
each. Fill
in coupon
below (block
letters) and
send, with
stamps, to
Merry
Treadle,
c/o 'The
War Cry,'
The Camp-
field Press,
St. Albans,
Herts.

Name

Address

Pattern No. Size

**MERRY TREADLE'S
PATTERN
SERVICE**



Pattern No. 35

This blouse will take 1 1/2 yd.
36-in. material for 36-in. bust.
Buttons of same material.
Patterns 6d. each. Fill in
coupon below (block letters)
and send, with stamps, to
Merry Treadle, c/o 'The War
Cry,' The Campfield Press,
St. Albans, Herts.

Name

Address

Pattern No. Size

**MERRY TREADLE'S
PATTERN
SERVICE**



Pattern No. 34

This blouse, softly shirred into
yoke, will take 1 1/2 yd. 36-in.
material for 36-in. bust.
Patterns 6d. each. Fill in
coupon below (block letters)
and send, with stamps, to
Merry Treadle, c/o 'The War
Cry,' The Campfield Press,
St. Albans, Herts.

Name

Address

Pattern No. Size

MERRY TREADLE'S SEWING HINTS

MERRY TREADLE, who, by the way, has been almost snowed under by requests for her recent overall and smock patterns, sends the following hints, which I pass on with the certainty that they will be eagerly read by the many who are endeavouring to make their own clothes while their menfolk grow their own greens.

Buttonholes. To make bound buttonholes, always use crossway, making quite sure that it is right on the cross. First mark your buttonhole with tailor's chalk, or tack with a piece of a different colour cotton. Then place your piece of crossway on to right side of garment.

Stitch all round the marking, making square ends.

Next cut through centre of stitching, cutting well into corners; then turn crossway through to wrong side, pulling well at corners, and sew in position.

Press well, then place facing over, and cut through at buttonholes, turn in and fell all round.

Hems. Mark the length all round with pins or tailor's chalk, then stitch a turning up along

edge of skirt, about 2 in. away from mark; trim and turn up hem to marking. Now sew, slipping the needle along stitched edge, and take up one thread of skirt, thus making hem invisible on right side.

Binding. Cut strips of crossway, and join. Be sure that the

Aunt Dora's Feature

A WOMAN'S BITS AND PIECES

grain matches at the joins. This is most important to get a good finish. Now press well and stitch on to garment, slightly pulling crossway, and easing the garment into crossway.

Never ease crossway as this will make the bind wring. Next trim edge and binding, then turn over to back of turning once, and then

ON THE LONDON FRONT

On the 'War Cry' round.

over again to stitching. Now sew, slipping the needle along bind and taking up one stitch with it. Never sew on to turning, always pick up a machine stitch. Press well, making sure not to stretch binding.

Fitting. To get a good fit, it is most important that the pattern is placed carefully on material, making sure that all pieces are on the right way of the grain.

Then cut out, allowing what turning that is needed. Before pattern is taken off, run a tack all round edge of pattern. Then pin garment together, placing notch with notch. Sometimes the shoulders need an extra lift at armholes if you have sloping shoulders, or at the neck if you have square shoulders.

Make sure that the grain is straight from shoulder to waist. When mounting skirt on to bodice the waist sometimes needs an extra lift at the sides.



THE CARE OF YOUR SEWING MACHINE

A little attention given to your sewing-machine will repay you. Keep it well oiled, with a lubricant especially prepared for sewing-machines. After oiling always do a little sewing on a waste piece of material to absorb the surplus oil.

Choose needles and thread to correspond with the material you use. Fine fabrics call for fine needles and thread, coarser fabrics for correspondingly coarser needles.

It is false economy not to change the needle in your machine occasionally, even though it is not broken. As needles become blunt, they draw the threads of the material instead of sharply piercing through them.

Let the material run through your machine without pulling the material either at the front or the back. If your machine is working properly, the material will run through quite easily, only needing to be guided. Make use of the straight guide and prevent that wobbly look which so often stamps a home-made garment.

Glance occasionally at the instruction book given with your machine, and get out your box of attachments. You will be pleasantly surprised at the help these can give you. Why turn and tack down hems when in the box of attachments you have a hemmer which will turn down the hems and keep them perfectly straight for you?

Get to know your machine and how to use it, and it will become a life-long friend.

MIRIAM MYHILL